

Color-Block Bag

Design by Amanda Saladin

1 2 3 4 5 6 INTERMEDIATE

FINISHED MEASUREMENTS

11 inches wide x 9 inches tall x
1 inch deep

MATERIALS

- Plymouth Yarn Galway
Worsted medium
(worsted) weight wool yarn
(3½ oz/210 yds/100g per ball):
 - 1 ball each #0008 bleach,
#0044 cherry red, #0134
field mouse grey and
#0009 black
- Size H/8/5mm crochet hook or
size needed to obtain gauge
- Yarn needle
- ¾-inch buttons: 2



GAUGE

19 sts = 4 inches; 19 rows = 4 inches

PATTERN NOTES

Weave in loose ends as work progresses.

Each square on charts equals 1 single crochet.

Join with slip stitch as indicated unless otherwise stated.

SPECIAL STITCH

Surface slip stitch (surface sl st): With black, ch 1, with RS of Bag facing, holding black on WS, insert hook RS to WS, yo, draw lp through to RS, *insert hook in next st from RS to WS, yo, draw up a lp, draw through to RS and draw through lp on hook, rep from * as indicated.

BAG

FRONT

Row 1: With grey, ch 54, sc in 2nd ch from hook (*first 2 chs count as first sc*), sc in each of

next 25 chs, **change color** (*see Stitch Guide*) to red, drop grey to WS, with red, sc in each of next 27 chs, turn. (53 sc)

Row 2: Ch 1, [sc in **front lp** (*see Stitch Guide*) of next st, sc in **back lp** (*see Stitch Guide*) of next st] across changing color as indicated on chart, ending with sc in front lp of last st, turn.

Rows 3–38: Rep row 2. At the end of row 38, fasten off.

BACK

Row 1: With red, ch 54, sc in 2nd ch from hook (*first 2 chs count as first sc*), sc in each of next 27 chs, change color to bleach, drop red to WS, with bleach, sc in each of next 25 chs, turn. (53 sc)

Rows 2–38: Rep row 2 of Front. At the end of row 38, fasten off.

BASE

Row 1: With grey, ch 46, sc in 2nd ch from hook, sc in each rem ch across, turn. (45 sc)

Row 2: Ch 1, 2 sc in first sc, [sc in back lp of next sc, sc in front lp of next sc] 21 times, sc in back lp of next sc, 2 sc in last sc, turn. (47 sc)

Row 3: Ch 1, 2 sc in first sc, [sc in front lp of next sc, sc in back lp of next sc] 22 times, sc in front lp of next sc, 2 sc in last sc, turn. (49 sc)

Row 4: Ch 1, [sc in front lp of next sc, sc in back lp of next sc] 24 times, sc in front lp of next sc, turn. (49 sc)

Row 5: Ch 1, **sc dec** (*see Stitch Guide*) in next 2 sc, [sc in front lp of next sc, sc in back lp of next sc] 22 times, sc in front lp of next sc, sc dec in next 2 sc, turn. (47 sc)

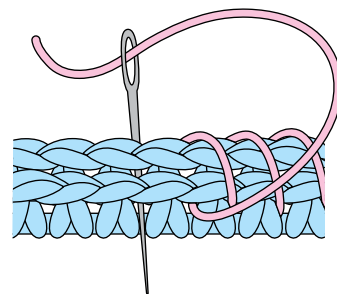
Row 6: Ch 1, sc dec in next 2 sc, [sc in front lp of next sc, sc in back lp of next sc] 21 times, sc in back lp of next sc, sc dec in next 2 sc. Fasten off. (45 sc)

BLACK TRIM

With RS facing and black, work 2 rows of **surface sl st** (*see Special Stitch*) along color changes on each Front and Back of Bag.

ASSEMBLY

With RS facing and length of matching yarn, **whipstitch** (*see illustration*) side edges of Front and Back tog, leaving bottom and top edges unsewn.



Whipstitch Edges

Sew Base into bottom of Bag.

Join (*see Pattern Notes*) black at sewn side seam, ch 1, sc evenly sp around outer top edge of Bag, join in beg sc. Fasten off.

FLAP

Row 1: Sk 19 sts of Back, join black in next sc, ch 1, [sc in front lp of next sc, sc in back lp of next sc] 7 times, sc in front lp of next sc, turn. (15 sc)

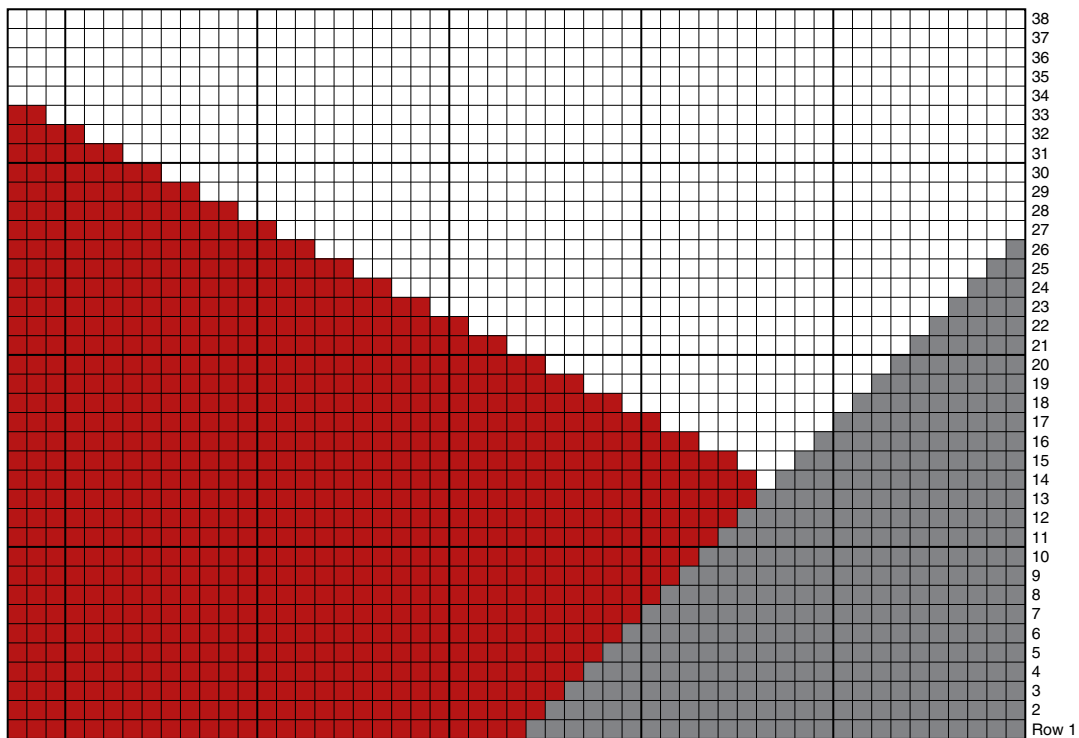
Row 2: Ch 1, [sc in front lp of next sc, sc in back lp of next sc] 7 times, sc in front lp of next sc, turn.

Rows 3–6: Rep row 2.

Row 7: Ch 1, [sc in front lp of next sc, sc in back lp of next sc] 3 times, ch 3, sk 3 sts (*buttonhole*), [sc in back lp of

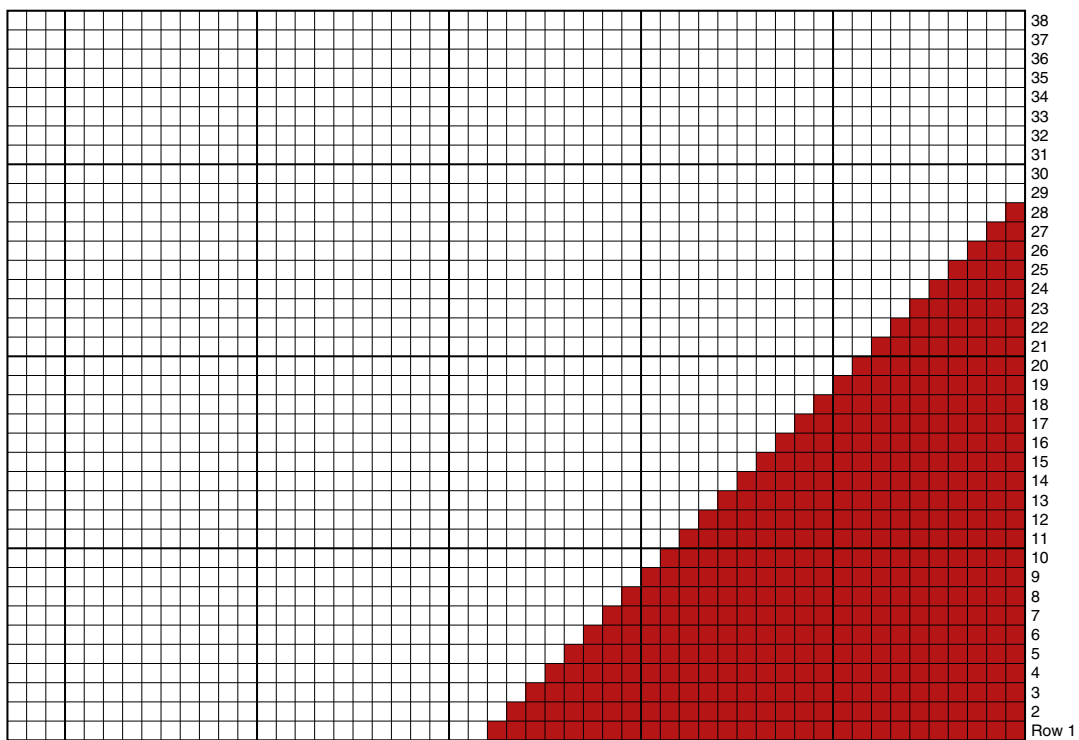


Just one ball each of any four yarn colors can create this stylish bag. Working in a combination of single crochet in the front and back loops gives it a lovely textured fabric.



Color-Block Bag
Front Chart
Note: One square = 1 sc.

COLOR KEY	
□	Bleach
■	Grey
■	Red



Color-Block Bag
Back Chart
Note: One square = 1 sc.

next sc, sc in front lp of next sc] 3 times, turn.

Row 8: Ch 1, [sc in front lp of next sc, sc in back lp of next sc] 3 times, sc in each of next 3 chs, [sc in back lp in next sc, sc in front lp of next sc] 3 times, turn. (15 sc)

Rows 9 & 10: Rep row 2.

Row 11: Rep row 7.

Row 12: Rep row 8.

Row 13: Ch 1, sc dec in next 2 sc, [sc in front lp of next sc, sc in back lp of next sc] 5 times, sc in front lp of next sc, sc dec in next 2 sc, turn. (13 sc)

Row 14: Ch 1, sc dec in next 2 sc, [sc in back lp of next sc, sc in front lp of next sc] 4 times, sc in back lp of next sc, sc dec in next 2 sc, turn. (11 sc)

Row 15: Ch 1, sc dec in next 2 sc, [sc in front lp of next sc, sc in back lp of next sc] 3 times, sc

in front lp of next sc, sc dec in next 2 sc, turn. (9 sc)

Row 16: Ch 1, sc dec in next 2 sc, [sc in back lp of next sc, sc in front lp of next sc] twice, sc in back lp of next sc, sc dec in next 2 sc. Fasten off. (7 sc)

HANDLE

Make 2.

Row 1: With black, ch 60, sc in 2nd ch from hook, sc in each rem ch across, turn. (59 sc)

Rows 2–6: Ch 1, [sc in front lp of next sc, sc in back lp of next sc] 29 times, sc in front lp of next sc, turn. At the end of row 6, leaving 24-inch length, fasten off.

Whipstitch row 1 of opposite side of foundation ch to row 6.

FINISHING

With length of bleach, sew buttons to Front of Bag opposite buttonholes.

Leaving 1½-inch sp on each side of Flap, sew Handle ends to Front and Back of Bag. **cw**



STITCH GUIDE

Need help? ▶ StitchGuide.com • ILLUSTRATED GUIDES • HOW-TO VIDEOS

STITCH ABBREVIATIONS

beg	begin/begins/beginning
bpdc	back post double crochet
bpsc	back post single crochet
bptr	back post treble crochet
CC	contrasting color
ch(s)	chain(s)
ch-	refers to chain or space previously made (i.e., ch-1 space)
ch sp(s)	chain space(s)
cl(s)	cluster(s)
cm	centimeter(s)
dc	double crochet (singular/plural)
dc dec	double crochet 2 or more stitches together, as indicated
dec	decrease/decreases/decreasing
dtr	double treble crochet
ext	extended
fpdc	front post double crochet
fpsc	front post single crochet
fptr	front post treble crochet
g	gram(s)
hdc	half double crochet
hdc dec	half double crochet 2 or more stitches together, as indicated
inc	increase/increases/increasing
lp(s)	loop(s)
MC	main color
mm	millimeter(s)
oz	ounce(s)
pc	popcorn(s)
rem	remain/remains/remaining
rep(s)	repeat(s)
rnd(s)	round(s)
RS	right side
sc	single crochet (singular/plural)
sc dec	single crochet 2 or more stitches together, as indicated
sk	skip/skipped/skipping
sl st(s)	slip stitch(es)
sp(s)	space(s)/space(s)
st(s)	stitch(es)
tog	together
tr	treble crochet
trtr	triple treble
WS	wrong side
yd(s)	yard(s)
yo	yarn over

YARN CONVERSION

OUNCES TO GRAMS	GRAMS TO OUNCES
1.....28.4	25..... ⁷ / ₈
2.....56.7	40.....1 ¹ / ₂
3.....85.0	50.....1 ³ / ₄
4.....113.4	100.....3 ¹ / ₂

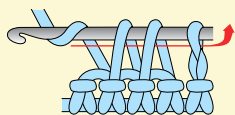
UNITED STATES

UNITED KINGDOM

sl st (slip stitch)	=	sc (single crochet)
sc (single crochet)	=	dc (double crochet)
hdc (half double crochet)	=	htr (half treble crochet)
dc (double crochet)	=	tr (treble crochet)
tr (treble crochet)	=	dtr (double treble crochet)
dtr (double treble crochet)	=	ttr (triple treble crochet)
skip	=	miss

Single crochet decrease (sc dec):

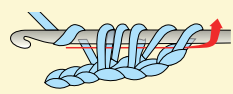
(Insert hook, yo, draw lp through) in each of the sts indicated, yo, draw through all lps on hook.



Example of 2-sc dec

Half double crochet decrease (hdc dec):

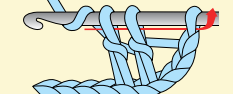
(Yo, insert hook, yo, draw lp through) in each of the sts indicated, yo, draw through all lps on hook.



Example of 2-hdc dec

Double crochet decrease (dc dec):

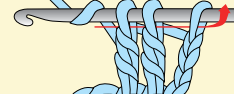
(Yo, insert hook, yo, draw lp through, yo, draw through 2 lps on hook) in each of the sts indicated, yo, draw through all lps on hook.



Example of 2-dc dec

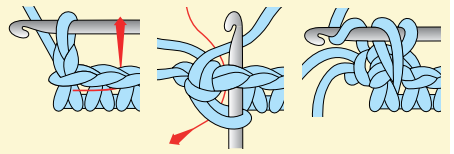
Treble crochet decrease (tr dec):

Hold back last lp of each st, tr in each of the sts indicated, yo, pull through all lps on hook.

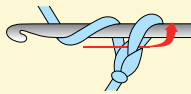


Example of 2-tr dec

Reverse single crochet (reverse sc): Ch 1, sk first st, working from left to right, insert hook in next st from front to back, draw up lp on hook, yo and draw through both lps on hook.

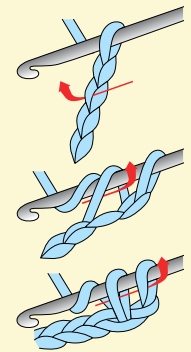


Chain (ch): Yo, pull through lp on hook.



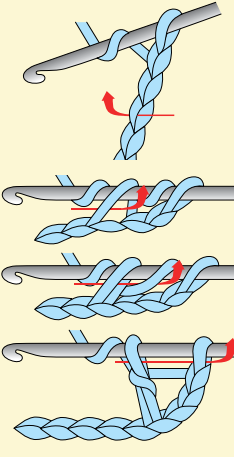
Single crochet (sc):

Insert hook in st, yo, pull through st, yo, pull through both lps on hook.



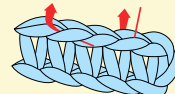
Double crochet (dc):

Yo, insert hook in st, yo, pull through st, [yo, pull through 2 lps] twice.



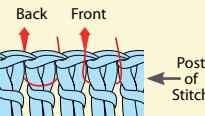
Front loop (front lp)
Back loop (back lp)

Front Loop Back Loop



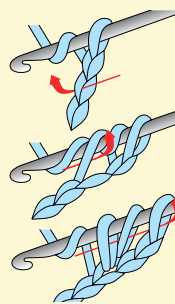
Front post stitch (fp):

Back post stitch (bp): When working post st, insert hook from right to left around post of st on previous row.



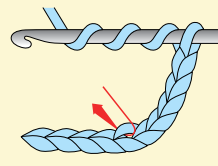
Half double crochet (hdc):

Yo, insert hook in st, yo, pull through st, yo, pull through all 3 lps on hook.

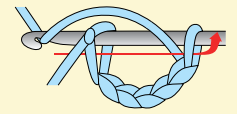


Double treble crochet (dtr):

Yo 3 times, insert hook in st, yo, pull through st, [yo, pull through 2 lps] 4 times.

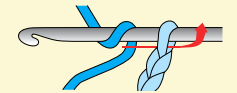


Slip stitch (sl st): Insert hook in st, pull through both lps on hook.



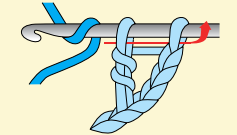
Chain color change (ch color change)

Yo with new color, draw through last lp on hook.



Double crochet color change (dc color change)

Drop first color, yo with new color, draw through last 2 lps of st.



Treble crochet (tr):

Yo twice, insert hook in st, yo, pull through st, [yo, pull through 2 lps] 3 times.

