

Lacy Clusters Scarf

Design by Roseanna Beck

1 2 3 4 5 6 CONFIDENT BEGINNER

FINISHED MEASUREMENTS

5 inches wide x 52 inches long

MATERIALS

- Berroco Folio light (DK weight alpaca/rayon yarn (1¾ oz/219 yds/50g per ball):
2 balls #4521 house island
- Size G/6/4mm crochet hook or size needed to obtain gauge
- Tapestry needle



GAUGE

Working in pattern: 4 fans and 2 ch-2 sps = 3 inches; 7 rows = 4 inches


ch, sk next 3 chs, dc in each of next 2 chs] 3 times, turn. (8 dc, 3 2V-sts)

Row 2: Ch 4 (see *Pattern Notes*), **fan** (see *Special Stitches*) in each ch-2 sp of next 2V-st, [ch 2, fan in each ch-2 sp of next 2V-st] twice, ch 1, sk next 2 dc, dc in top of beg ch-3, turn. (2 dc, 6 fans, 2 ch-1 sps, 2 ch-2 sps)

Row 3: Ch 3 (see *Pattern Notes*), dc in first ch-1 sp, 2V-st in sp between next 2 fans, [2 dc in next ch-2 sp, 2V-st in sp between next 2 fans] twice, dc in last ch-1 sp, dc in 3rd ch of beg ch-4, turn. (8 dc, 3 2V-sts)

Rows 4–87: [Rep rows 2 and 3] 42 times.

Row 88: Ch 1, **shell** (see *Special Stitches*) in first dc, *shell in 2nd dc of next 2V-st, sk rem dc of same 2V-st*, shell in next dc, rep between * once, sk next dc, shell in next dc, shell in 3rd dc of next 2V-st, sc in top of beg ch-3. Fasten off. (6 shells)

Edging row: With WS of row 1 facing and working in opposite side of foundation chs, **join** (see *Pattern Notes*) in first ch, (ch 2, 2 dc) in same ch, sk next 4 chs, shell in next ch (*base of first 2V-st*), [sk next 4 chs, shell in next ch, sk next 3 chs, shell in next ch (*base of next 2V-st*)] twice, sk next 4 chs, sc in last ch. Fasten off. (6 shells) 

PATTERN NOTES

Weave in loose ends as work progresses.

Chain-4 at beginning of row counts as first double crochet and chain-1 unless otherwise stated.

Chain-3 at beginning of row counts as first double crochet unless otherwise stated.

Join with slip stitch as indicated unless otherwise stated.

SPECIAL STITCHES

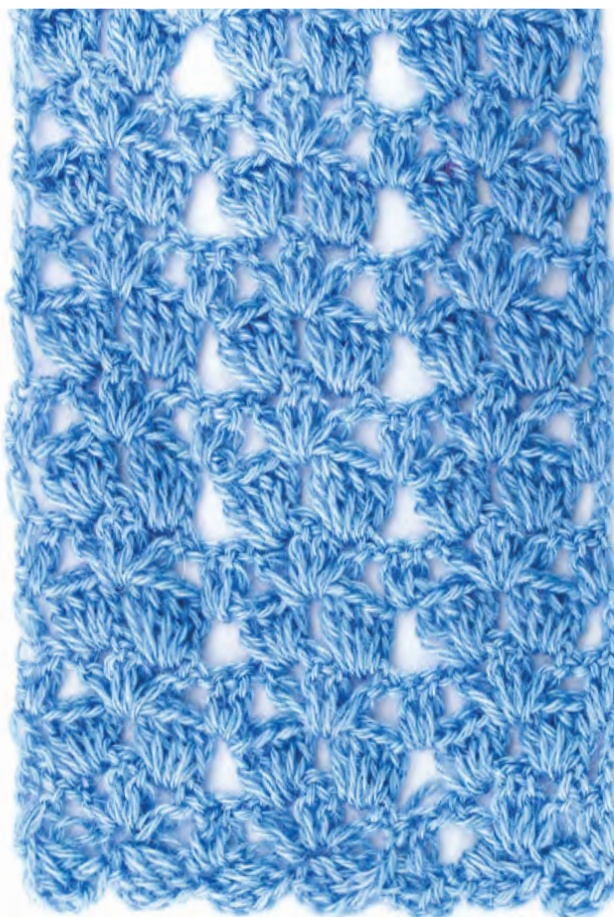
Double V-stitch (2V-st): (Dc, ch 2, 2 dc, ch 2, dc) in indicated st or sp.

Fan: 4 dc in indicated sp.

Shell: (Sl st, ch 2, 2 dc) in indicated st or sp.

SCARF

Row 1 (RS): Ch 31, dc in 4th ch from hook (*beg 3 sk chs count as first dc*), [sk next 3 chs, 2V-st (see *Special Stitches*) in next



This light and airy scarf features an openwork lace pattern worked in a simple 2-row repeat, making it a quick and easy project.



Annie's®

Published by Annie's, 306 East Parr Road, Berne, IN 46711. Printed in USA. Copyright © 2016 Annie's. All rights reserved. This publication may not be reproduced in part or in whole without written permission from the publisher.

Every effort has been made to ensure that the instructions in this publication are complete and accurate. We cannot, however, take responsibility for human error, typographical mistakes or variations in individual work. Please visit AnniesCustomerService.com to check for pattern updates.